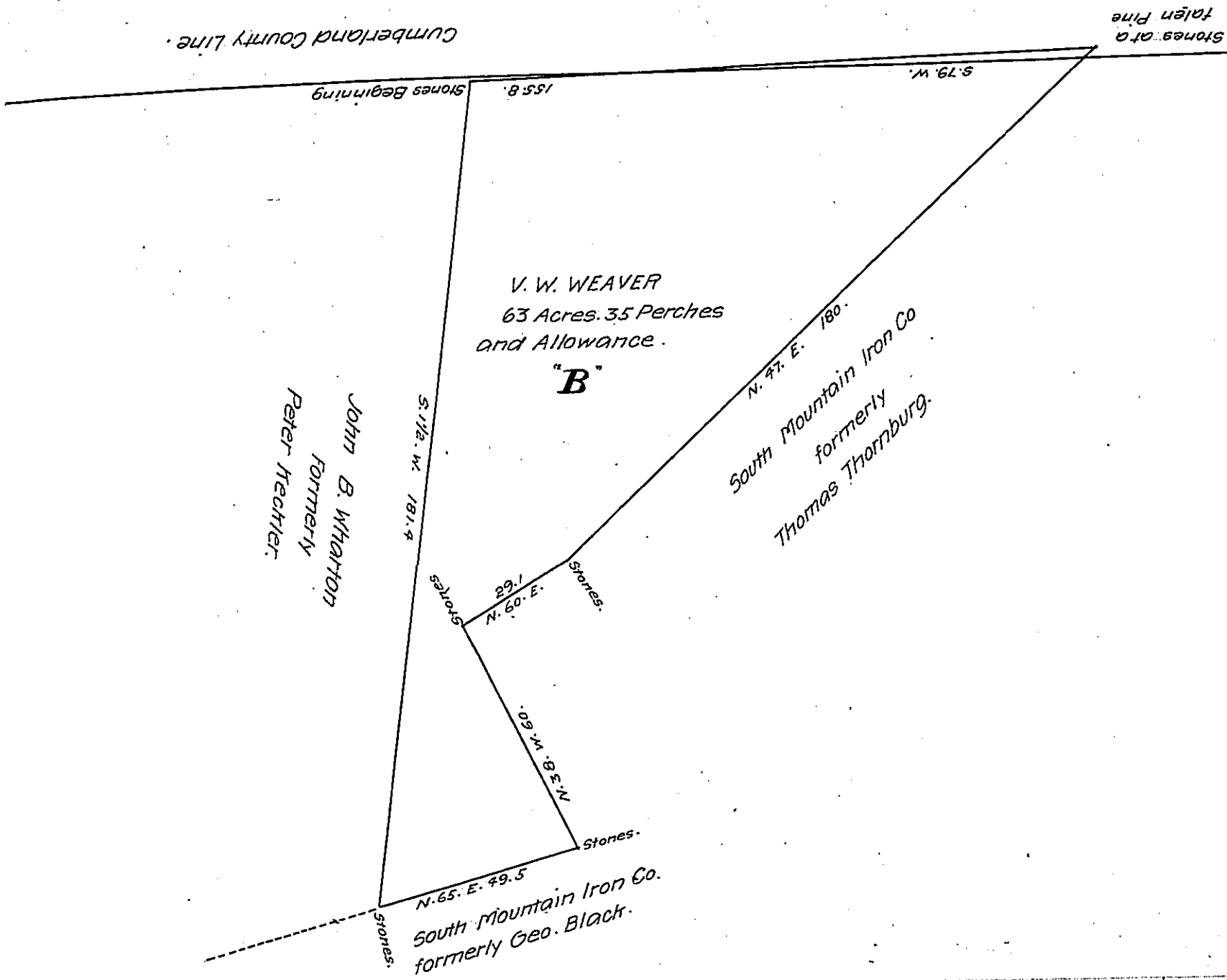


FORM NO 1.



*Draft of A Tract of Land Containing 63 Acres and 35 Perches and Allowance of Six per Cent for Roads Situate in Menallen Township in the County of Adams Surveyed the 15<sup>th</sup> Day of Aprile A.D. 1874 in pursuance of A Warrant Granted to V. W. Weaver Dated the 22<sup>th</sup> Day of January A.D. 1874 for 66 Acres unimproved is Timber Land Lying in the South Mountain.*

*Jesse L. Kreller  
County Surveyor.*

*To Robert B. Beath Surveyor General.*

*IN TESTIMONY that the above is a copy of the original remaining on file in the Department of Internal Affairs of Pennsylvania, made conformably to an Act of Assembly approved the 16th day of February, 1833, I have hereunto set my Hand and caused the Seal of said Department to be affixed at Harrisburg, this sixteenth day of July 1907*

*Henry Houck  
Secretary of Internal Affairs.*